

# GasStop<sup>TM</sup>

THE ULTIMATE IN GAS SAFETY





# INTRODUCING GASSTOP

## THE ULTIMATE IN GAS SAFETY

GasStop is an emergency 100% shut-off device for bottled and portable gas systems. In the event of a major leak GasStop will instantly and automatically shut-off the flow of gas. Not only is this device an easy to fit, autonomous must-have safety device, it also has a useful multipurpose gas pressure indicator. Use gas, use GasStop.





# GasStop<sup>®</sup>

## SAFE

100% automatic shut-off  
in the event of a  
major leak

## PRACTICAL

Useful indicator shows  
you when your gas is  
running low

## EASY

Easy to install,  
easy to use







### **100% EMERGENCY SHUT-OFF**

GasStop will instantly and automatically shut-off the supply of gas in the event of a major leak or system failure.



### **USEFUL GAS LEVEL INDICATOR**

The useful pressure gauge will let you know when your gas is running low, letting you plan your refill ahead of time.



### **MINOR LEAK TESTER**

GasStop can also be used to test for minor leaks prior to use. Always check to make sure your gas system is leak free.



### **HIGHLY ENGINEERED**

Every GasStop is made using the highest quality materials and the latest manufacturing and testing technology.



### **QUALITY APPROVED**

Our products are independently tested, in accordance with ISO and EN standards.

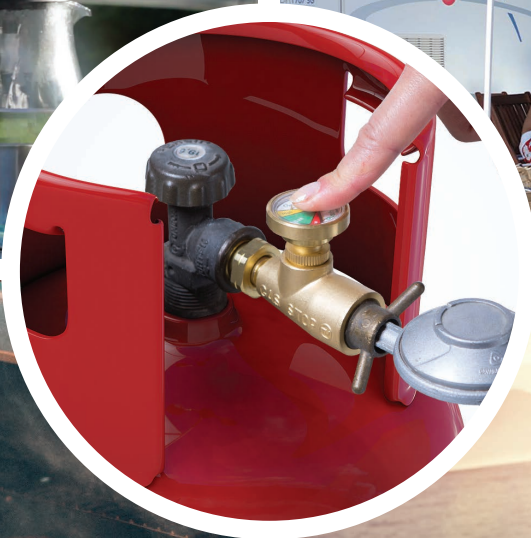


### **5 YEAR WARRANTY**

All of our products come with a 5 year warranty. We are proud to provide the highest quality devices to all of our customers.

# GasStop<sup>®</sup>







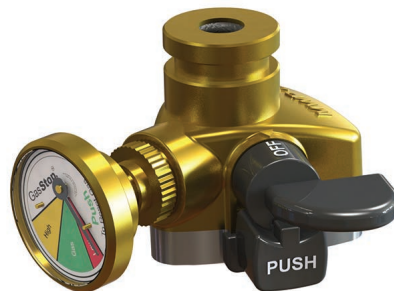
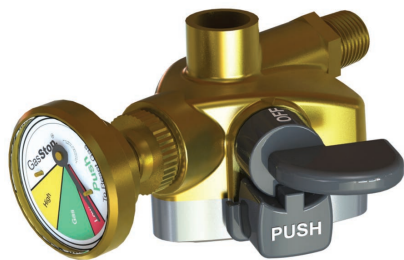
## WHERE TO USE GASSTOP?

Get outside with your friends and family, light up the barbecue and get cooking with the added safety of GasStop. Don't run out of gas halfway through either, the useful gauge will let you know when you're running low.

Using bottled gas is a great way to bring your home comforts with you on the road. Use GasStop to enhance the safety of your RV or Caravan gas system and make use of the simple gauge to keep an eye on your gas levels quickly and easily.

Do you use bottled gas on your boat, on your patio heater, or in your home? GasStop will enhance the safety of your gas system, giving you peace of mind whatever your use may be.

# OUR PRODUCT RANGE



# EASY TO USE, EASY TO INSTALL

1



Connect the GasStop to your gas bottle.

2



Tighten the GasStop using the correct tool.

3

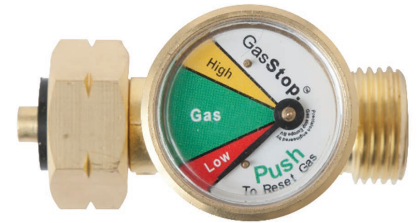


Connect your regulator (not an EFV regulator) to the GasStop and install your hose and device as normal.

4



Switch the gas on and pump the gauge 4-6 times to prime the system.



High Pressure



Enough Gas



Refill Soon

## WHERE YOU CAN FIND US



GasStop<sup>®</sup>



## WHERE TO ORDER

GasStop is available to buy around the world. If you are looking to buy a GasStop for your gas cylinder or are interested in stocking our product visit our website today for more information.

## SHOP DISPLAY

Our attractive display tray adds great impact to any shop counter holding up to 10 units in store (as shown), and 20 units in transit. The tray is a compact and informative sales tool, featuring a useful QR code linking the customer to GasStop videos and useful information.



# THE ULTIMATE IN GAS SAFETY

Use gas? Use GasStop™





**GasStop™ Europe BV**

**[info@gasstopglobal.com](mailto:info@gasstopglobal.com) | [www.gasstopglobal.com](http://www.gasstopglobal.com)**